

2008-2009 Board Members

President

Patty Denner
Kings Materials
285-2565

1st Vice President

Matt Briehl
DuTrac Community Credit Union
285-7100

Secretary/Treasurer

Dr. Joshua Lawlor
Park View Back & Neck Care Ctr.
285-8230

Members at Large

Brenda Drummond
First Central State Bank
285-285-2033
Lynnette Olson
Valley Bank
285-8800
Matt VanWaus
City of Eldridge
285-4841
Kim Wilkins
Ruhl and Ruhl
441-5177

Past President

Linda Reickard
United Egg Producers
285-9100

Director

Carolyn Scheibe
carolyn@northscottchamber.com

Office Manager

Ann Mohr
ann@northscottchamber.com

Chamber Office Hours:

Monday – Friday 9:00 a.m. - Noon
Office – 285-9965
Fax – 285-9964

Website

www.northscottchamber.com



**North Scott
Area Chamber
Of Commerce**

February 2009

CHAMBER CHAT



**Eldridge-North Scott Chamber
Chili Cook-Off**

Thursday, Feb. 12, 2009 Del's in Eldridge

Food, Suds & Fun!

NS Chamber

*Show up with a good appetite, a clear
palate, and vote for your favorite chili!*

Contestants will try to claim the top prize of
"Creator of the Best Chili in North Scott".

Tasting cups will be sold so you can sample all the chili!
(Proceeds go to the Chamber Scholarships Fund!)

Hats off to the Cooks!

City of Eldridge
Grand Haven Retirement
Crown Trophy
US Bank
First Central State Bank
Amhof Trucking

Park View Back & Neck
GT Sports
North Scott Foods
Eldridge Spine and Wellness
Valley Bank

Dessert Courtesy of Dutrac
Community Credit Union



**MARK
THIS
DATE**

**Thurs., Feb. 12, 2009
5:00—7:00 PM
Del's Pub**

Sponsors . . .

*Del's Eatery & Pub
Eldridge-North Scott
Chamber and All the Cooks!*

New Member.....

Coffee and Cream Cafe



Owner: Tina Searle
17 Lincoln Ave.
Park View, IA 52748
Tel.: 285-7031
Hours: M-F 6:30AM-6PM
Sat./Sun. 7:30AM-4PM

Coffee and Cream opened for business on October 20, 2008. The café has a relaxing, cozy atmosphere inside, or a convenient drive-through. They offer five choices of gourmet drip coffee daily. Coffee and Cream freshly brews their espresso drinks. They also have blended ice coffees, smoothies, hot chocolates, chai teas, and many more to choose from. Coffee and Cream also carries bagels, pastries, and cakes. They invite you to bring your business acquaintances, family, and friends to enjoy a fresh cup of coffee and a treat in your own private room.

The 2010 Census – A Great Way to Earn Extra Money

The U.S. Census Bureau is recruiting temporary part-time census takers for the 2010 Census. The pay is good, the hours are flexible, and the work is close to home. For more information, contact Roy Spencer at (563) 344-9895 or email "jspencermusic@mchsi.com"

Countryside Community Theatre (CCT) is proud to announce its Summer 2009 season.

South Pacific

Dates: June 19, 20, 21, 25, 26, 27

Annie Get Your Gun

Dates: July 17, 18, 19, 23, 24, 25.

Both shows will be performed in the North Scott Fine Arts Auditorium on First Street in Eldridge.

AUDITIONS!

Auditions will be held on February 28th and March 1st at North Scott HS. If you are interested in volunteering for a production or serving on one of our production staffs, please contact Countryside at myatt@putnam.org or dtandeski@aol.com

Congratulations to Chamber member April Rus (The Hair Hut) and husband Doug. They welcomed the birth of their son Zane on December 20, 2008.

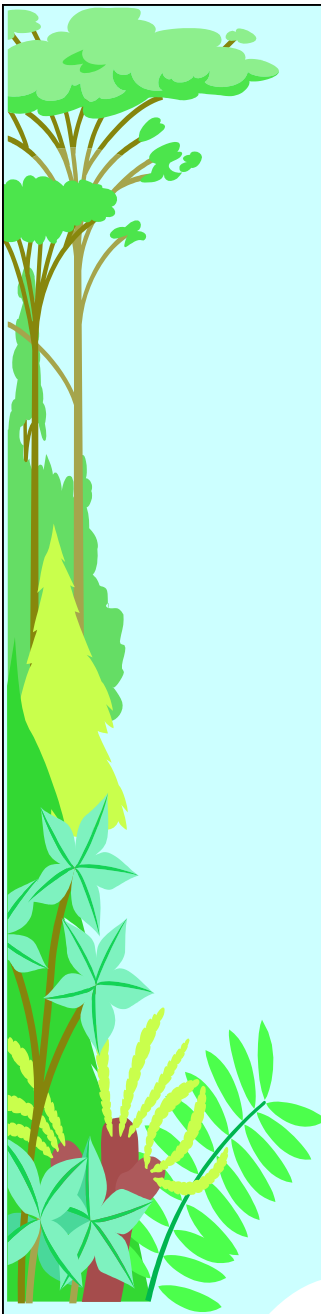
Phishing Scams, Frivolous Arguments Top the 2008 "Dirty Dozen" Tax Scams

Early in 2008, the IRS issued its list of the 12 most egregious tax schemes and scams. As an ongoing feature of this newsletter, the Chamber will be reporting on the numerous Internet-based ploys to steal financial information from taxpayers.

"Taxpayers should be wary of scams and promises to avoid paying taxes that seem too good to be true", IRS Commissioner Linda Stiff said. "There is no secret formula that can eliminate a person's tax obligations."

One of the most common schemes is **Phishing**.

Phishing is a tactic used by Internet-based thieves to trick unsuspecting victims into revealing personal information they can then use to access the victim's financial accounts. These criminals use the information obtained to empty the victims' bank accounts, run up credit card charges and apply for loans or credit in the victims' names. Phishing scams often take the form of an email that appears to come from a legitimate source. Some scam emails falsely claim to come from the IRS. To date, taxpayers have forwarded more than 33,000 of these scam emails, reflecting more than 1500 different schemes, to the IRS. The IRS never uses email to contact taxpayers about their tax issues. Taxpayers who receive unsolicited email that claims to be from the IRS can forward the message to a special electronic mailbox, "phishing@irs.gov", using instructions contained in an article titled "How to Protect Yourself from Suspicious Emails or Phishing Schemes." Remember: the only official IRS Web site is located at **www.irs.gov**. *Next month—we'll look at economic stimulus payout scams.*

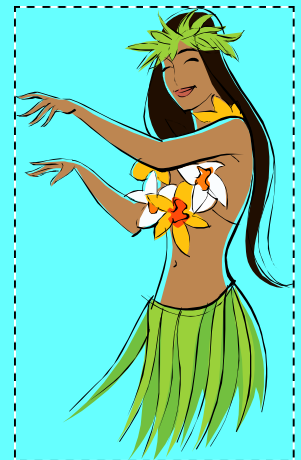


Coming in April 2009

*The North Scott Chamber
presents:*

Moolah Hula

Friday night, April 24



6-9PM

***At Traditions Banquet Hall
Eldridge***

***Featuring Hors D'oeuvres and Beverages
Awards
Live Auction/Silent Auction***

***Buy a chance for a Dream Vacation. For just \$25
purchase a raffle ticket for a \$4000 Travel Voucher.
Only 400 tickets will be sold!***

Raffle tickets now available through the Chamber Office or one of the Moolah Hula committee members: Bruce Duling (Central Scott Telephone) Yvonne Van Blaircom, Cathy Diaz, and Joy Rasche (Valley Bank) Brenda Drummond (First Central State Bank) and Bonnie Amhof (Amhof Trucking)

**A NEW Advertising
Opportunity!**

E-Mail Advertising—Reach Your Target Market!

Do you have a special you'd like to offer fellow members? A new product to advertise? Maybe you just want to introduce yourself. The internet is the most cost efficient way to reach your market.

Here's How It Works:

- You provide the Chamber with an electronic version of your advertising.
- We send it out to the membership of the chamber in an e-mail.
- Only one advertising email will be sent per month (12 per year).
- No email addresses are sold or given to the advertiser.

Cost: \$50 per email

Don't Wait! Call the Eldridge-North Scott Chamber today to book the month for your email advertising!
If you have any questions, please call Carolyn or Ann at 285-9965!

Phone: 563.285.9965 Fax: 563.285.9964 E-mail: Info@northscottchamber.com

**Eldridge-North Scott Chamber of Commerce
220 West Davenport Street
Eldridge, IA 52748**

Address Service Requested

Legislative Luncheons—Mark Your Calendars

The Eldridge-North Scott Chamber, *the Bettendorf Chamber*, and *Davenport One* will again host

Legislative Lunches with our Local Legislators

next year to discuss issues of interest to our members.

These lunches will be held at the
Clarion Hotel & Conference Center, 53rd & Brady Sts., Davenport, IA
from 11:45 to 1:00 p.m. The dates are:

Friday, February 27 Friday, March 23
Friday, April 24 Friday, May 22

To Register, call 823-3693 or go to the Calendar of Events page at
[www. DavenportOne.com](http://www.DavenportOne.com)

Davenport One is handling all reservations for these luncheons.

Cost: \$10 in advance or \$15 at the door for Chamber members; \$20 for non-members